

How to connect an external device and setup the settings in Media Center?

1. Please run Media Center and click "Settings".



2. Click "TV".



3. Click "Next" to continue.



4. Setup the region according to your location. Click **“Next”** to continue.



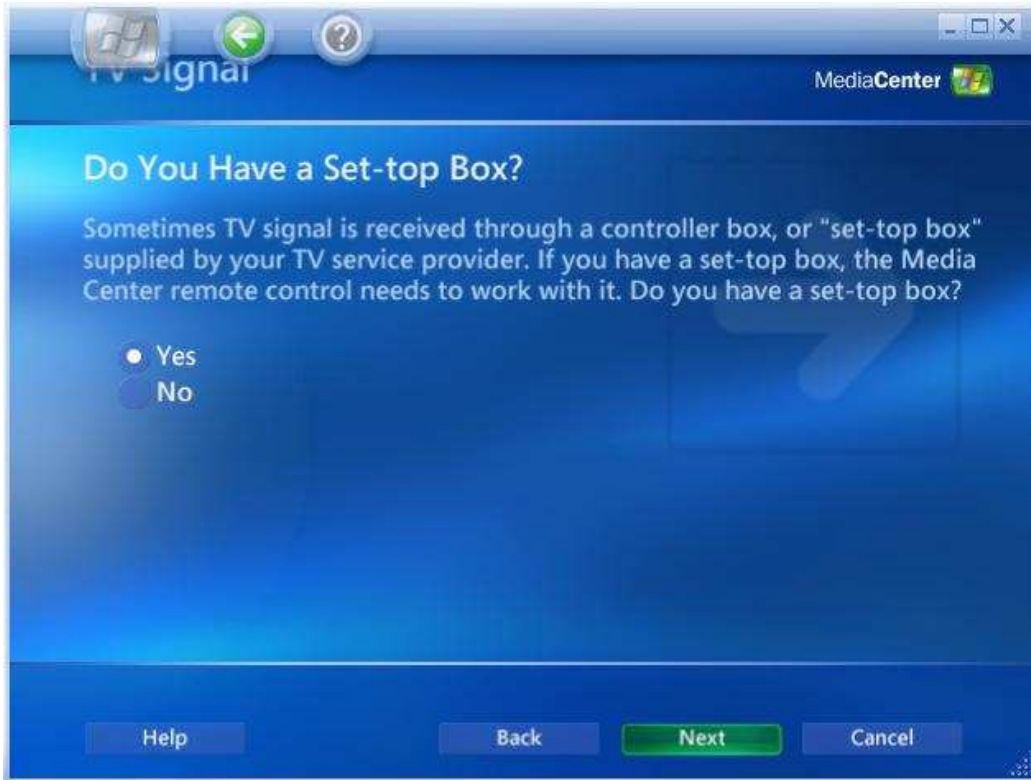
5. Select country. Click **“Next”** to continue.



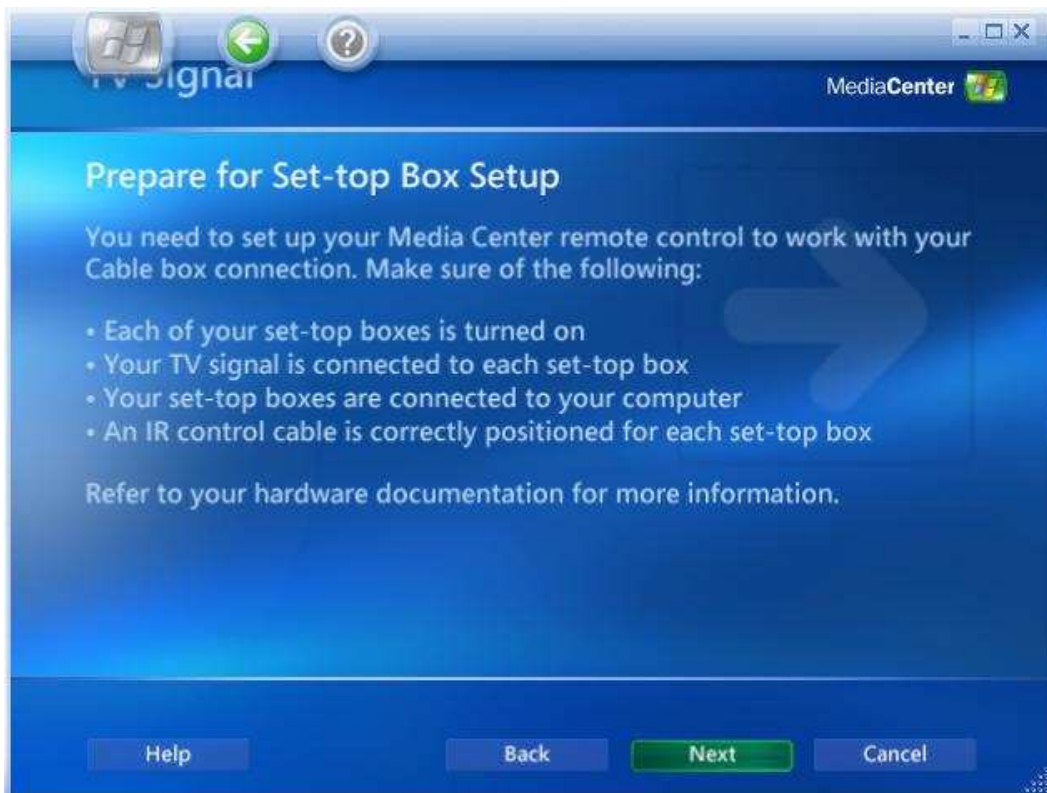
6. The system will appear "Select Your TV Signal". Select a correct TV signals according to your demands.



7. Click "Yes" to continue to set up.



8. Then, click “**Next**” to continue.



9. Select an appropriate signal source you wish. If you connect an external device to the TV card with S-video cable, please select S-Video1.



10. If you have a Media Center remote control, please select **Yes**.



11. Click "**Next**" to continue.



12. Select an appropriate item according to your demands. Click **“Next”** to continue.



13. Click **“Next”** to continue.



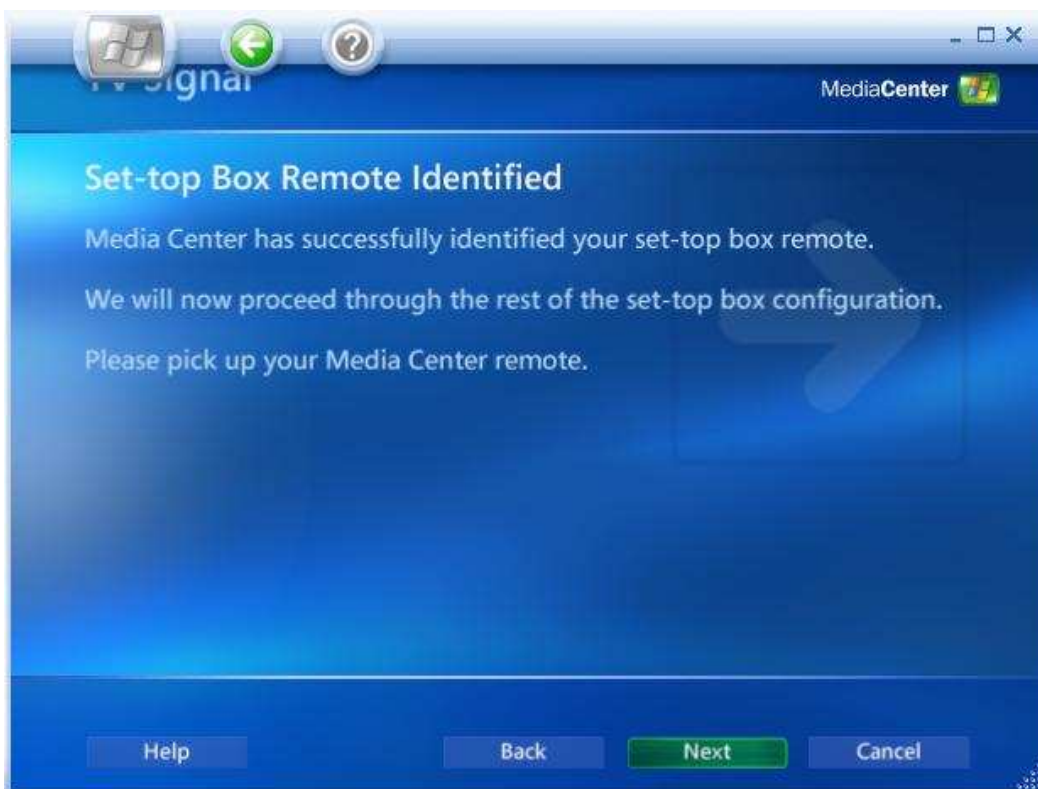
14. If you have a remote control for Media Center, please follow the instruction to hold button.



15. Then, click "**Next**" to continue.



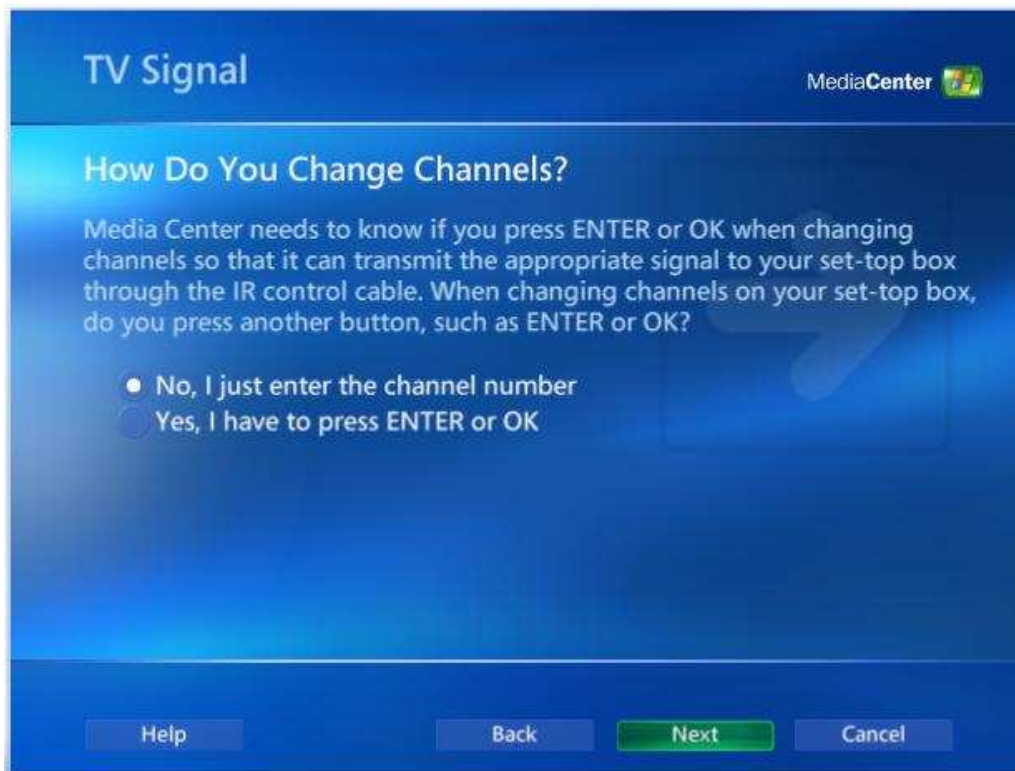
16. Click “Next” to continue.



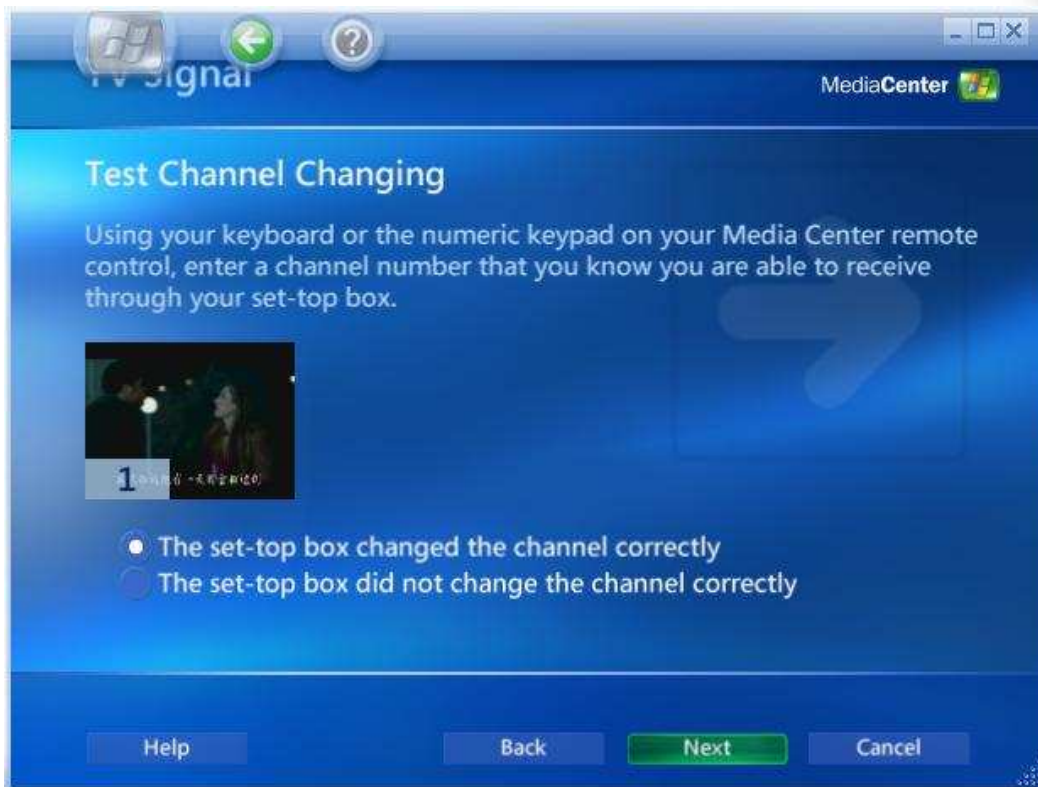
17. Select an appropriate number of digits according to your demands. Click “Next” to continue.



18. Click “**Next**” to continue.



19. Click “**Next**” to continue.



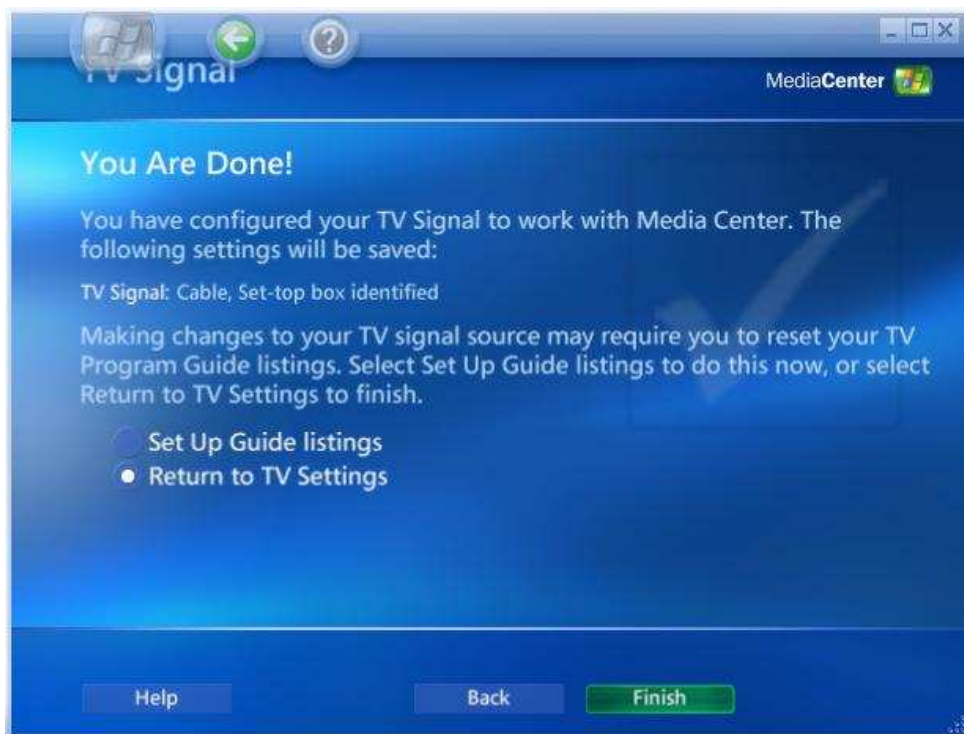
20. Click **Next** to continue.



21. Click **Next** to continue.



22. Click **Finish** to complete.



23. Return to the following screen to watch the video.

